



Pro Dispersion Photoshop Action work only in Photoshop and use on all type of images. This action works in a non-destructive way to achieve a high-quality look. So, the original image layer will remain unchanged. This action has been tested and works on many images and also checked on photoshop **CS4-CS6, CC 2015, CC 2015.5, CC 2017, CC 2018 + version**. **Follow us** graphicriver for latest updates. This action work only in English version if you need to Change the Language Click the Link from Description.

INSTRUCTIONS

1. Your photo should be in **RGB** Color mode and **8 Bits/Channel**. To check this, go to **Image > Mode**. Check in Figure 1

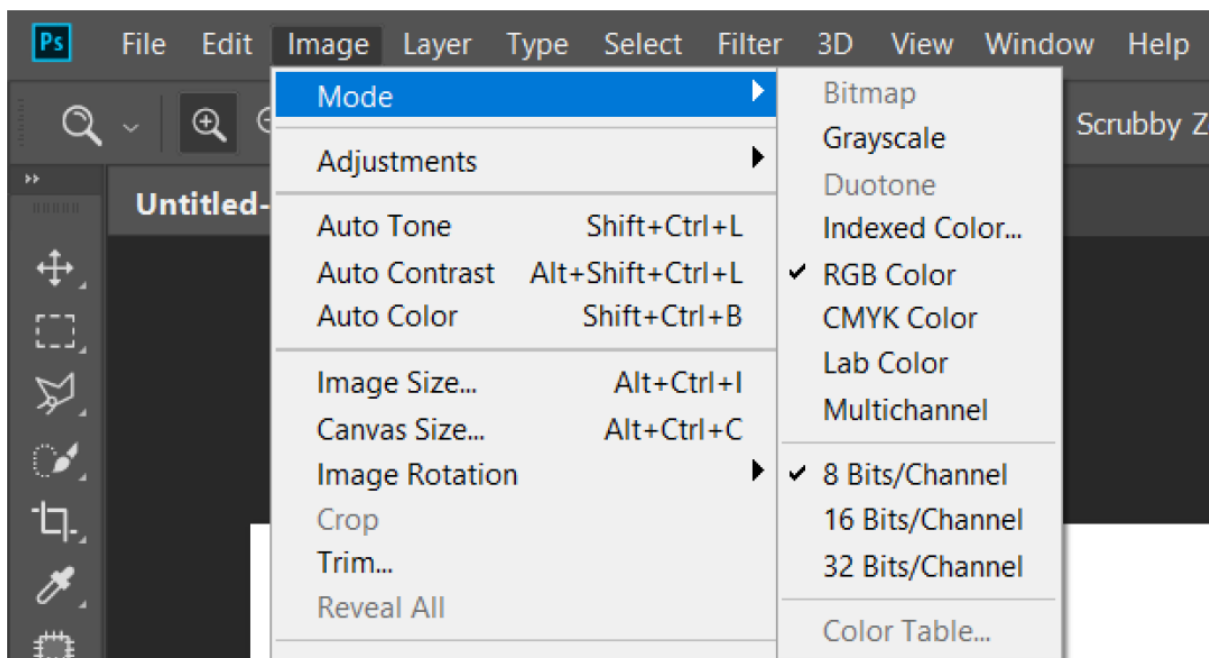


Figure 1

2. Your photo should be the Background layer. If it is not, go to **Layer > New > Background from Layer**. Check in Figure 2.

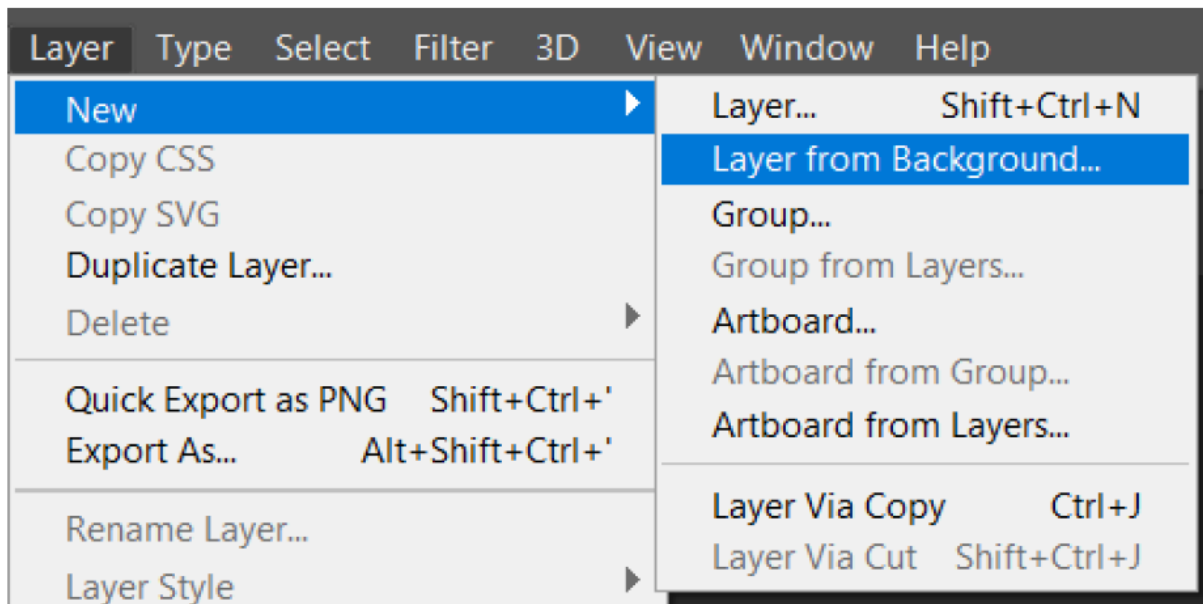


Figure 2

3. This Action Work only in English Version if you want to change language See Description Link.

4. Click the **fly-out** list of the Layers panel and click **Panel Options...** Make sure Add "copy" to Copied Layers and Groups is checked. *Figure 3 & 4.*

Figure 4

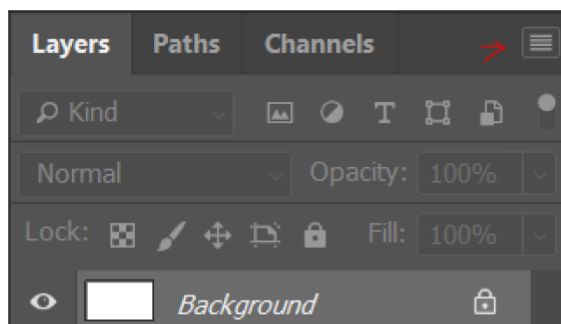
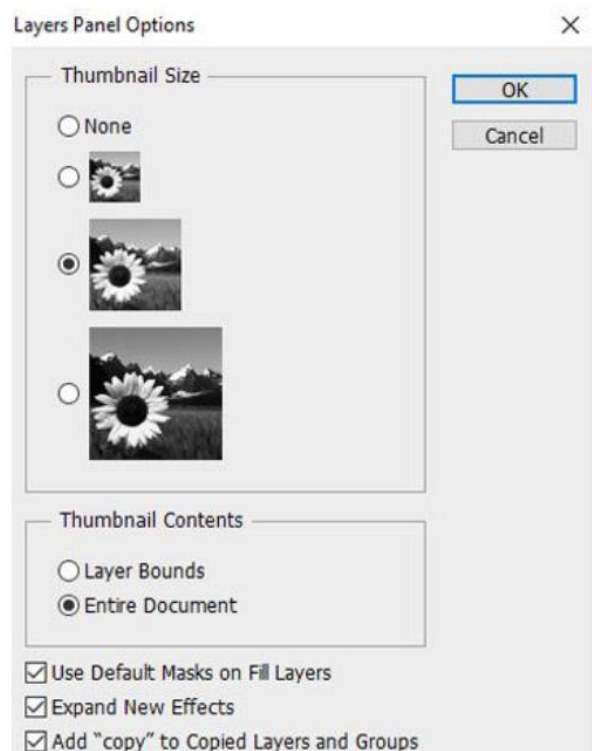


Figure 3



5. Make sure your brush opacity and flow 100% check *figure 5*. This menu shows when you select brush from toolbox.

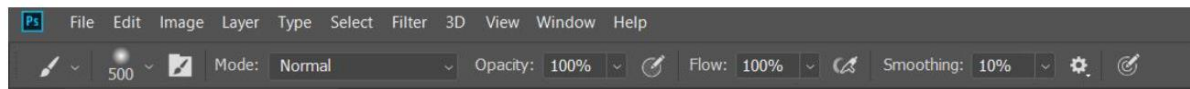


Figure 5

6. If you have done everything and **still getting errors, please reset your preference files.** “**Edit > Preferences > General**” and then selecting **Reset Preferences** then restart photoshop.

How to load Action, brush and pattern file...

Load Brush:

Go to **Edit > Presets > Preset Manager...** In the Preset Manager window, select Preset Type: Brushes and click Load...

Load Pattern:

Go to **Edit > Presets > Preset Manager...** In the Preset Manager window, select Preset Type: Pattern and click Load...

Load Action:

Go to **Window>Action (Alt+F9)**, Click the **fly-out** list of the Action panel right side to load action.

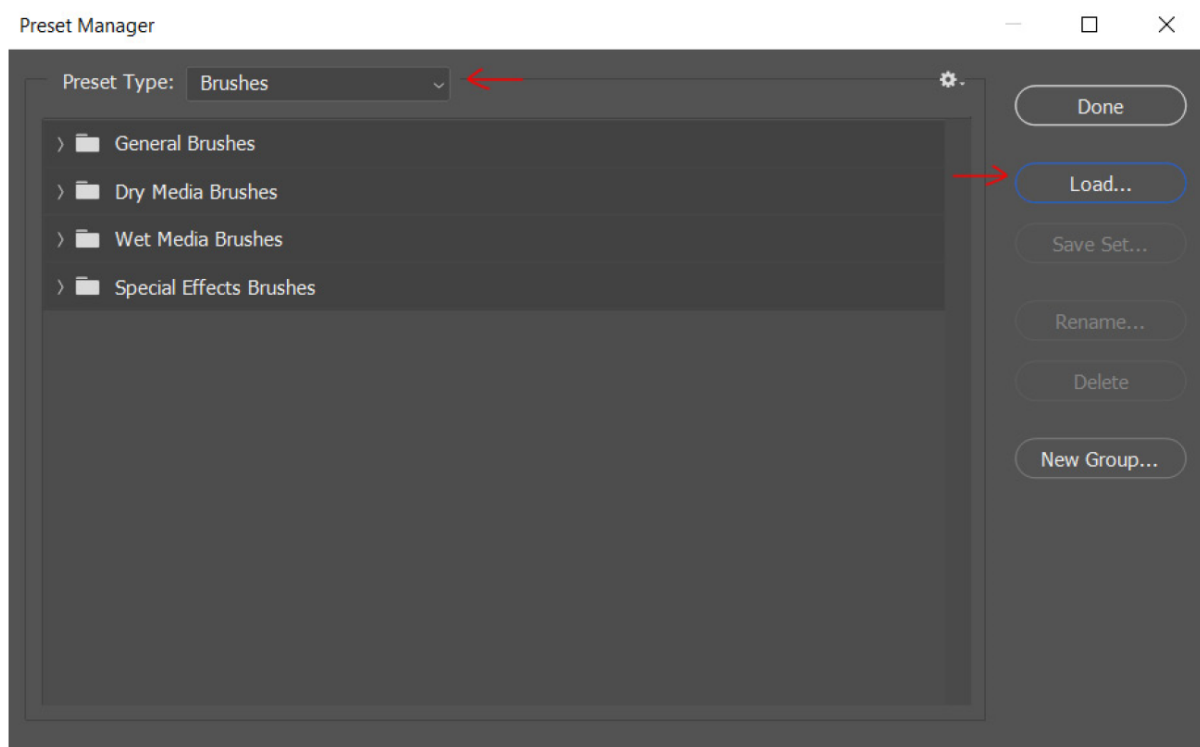


Figure 6

How to Set Up Your Document...

1. Just open your image on which you want to work. To open your photo, go to **File > Open...**, choose your photo, and click Open.
2. Make sure your image width or height min 2500px with 300dpi.
3. Then create a new layer and name it **"brush"**. Make sure your layer name in lowercase as I mentioned.
4. Now, select a Soft Round brush with any color then brush over the "brush" layer for selecting the area which you want to apply the effect.
5. Now play the action.
6. There is lot of option and Layer for you please explore them to get lot of possible unique and exceptional results.

In case you come across any problem, please contact me via my profile:
https://graphicriver.net/user/andit_themes#contact

I hope you like our item

PLEASE, DON'T FORGET TO **RATE** THIS PRODUCT

Thanks...