

DUOTONE



Lightroom Presets

Thank you for purchase the Duotone Lightroom Presets. I really hope you like it! Duotone Lightroom Presets Perfect for Photographers & Graphic Designers. I have been created with proper colour adjustment & clean arrangement to bring your images to life using Powerful tools & methods.

Supported File Format:

Camera raw Formats (RAW)
Digital Negative Format (DNG)
TIFF Format
JPEG Format
Photoshop Format (PSD)

Preset may not work well on:

Overexposed/Underexposed
No Background
Low Quality Image

Format:

.lrtemplate

Not Supported File Format:

PNG

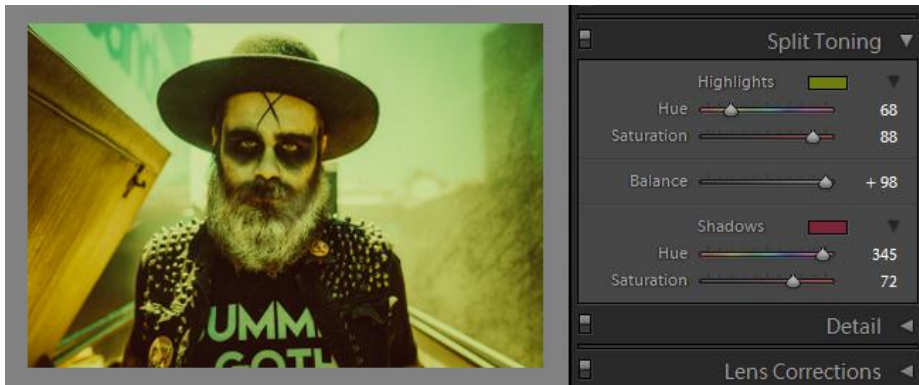
Here are the installation instructions for installing presets into Lightroom.

1. Please download & unzip the presets file & open the resulting folder
2. In this folder(Duotone Collection)you will find the presets, they are the files with the .lrtemplate extension
3. Open Lightroom
4. Choose Edit>Preferences
5. On the Preferences window, please choose the presets tab
6. Click on the button labeled show Lightroom presets folder(NOTE: If you do not see the AppData folder Go to the Control Panel, select Folder Options, click on the view tab. You will see an option that says "show hidden files & folders". Turn this option on, then click ok. As soon as you do this the appdata/program data folder will become visible)
7. There will be a new Explorer window that appears. Choose the folder named Develop Presets. Copy the Downloaded folder with your presets into the Develop Presets folder. It is recommended that you copy the preset folder to this new location rather than moving it from its original location.
8. Simply restart Lightroom & that's it(your presets can now be found in the Presets section of the Develop module of Lightroom)

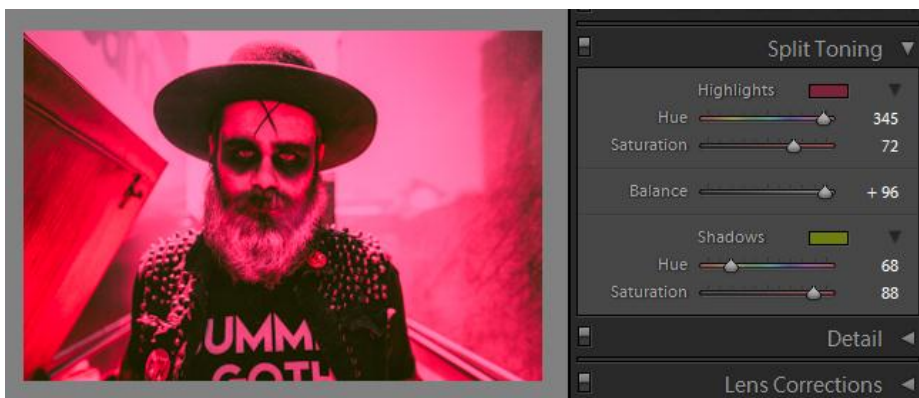
If you are having trouble installing these presets, my wizard are ready to help you !!!

24/7 Support: prosen.biswas@hotmail.com

Here Some Instruction about preset



Pavlov 1



Pavlov 2 (vice versa)

THANK YOU