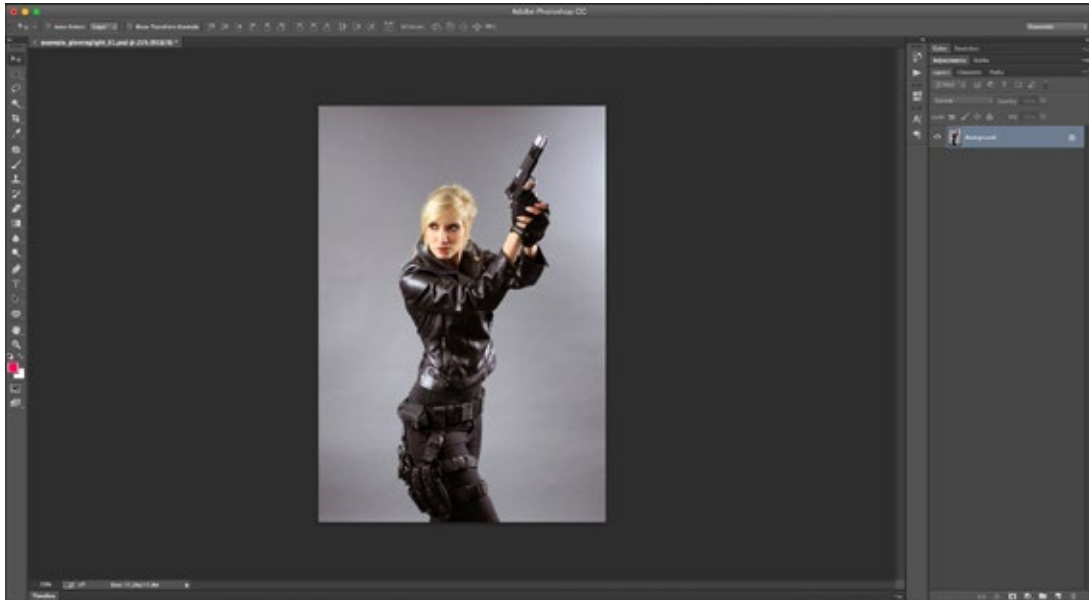


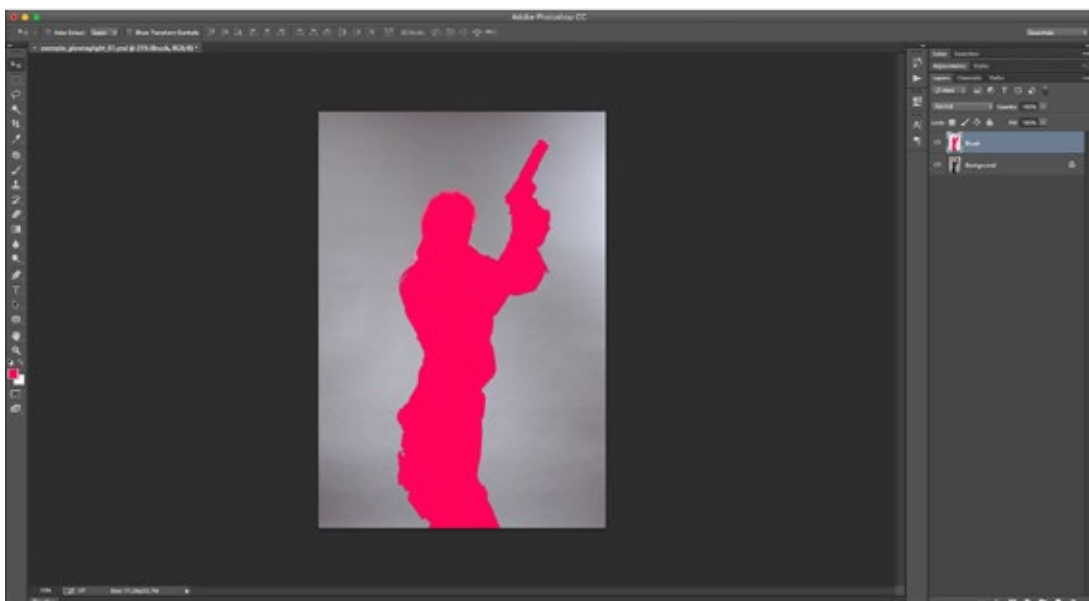
INSTRUCTIONS

- 1 First of all, **open the image** in Photoshop.



- 2 Create a **new layer** and **paint the area** you want to apply the effect.

- 3 Rename new layer to **“Brush”** (with capital B).

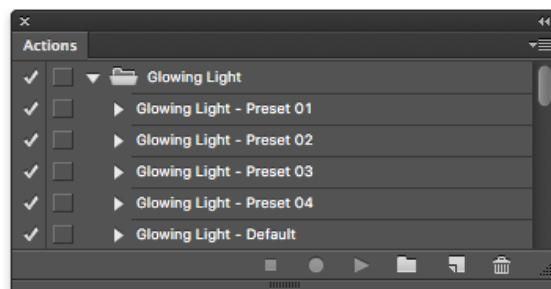


- 4** Load Photoshop action **double-clicking** the file.



- 5** Open the actions panel, go to **Windows > Actions** or press Alt + F9 / Option + F9.

- 6** Now, select the action you prefer and **click play**.

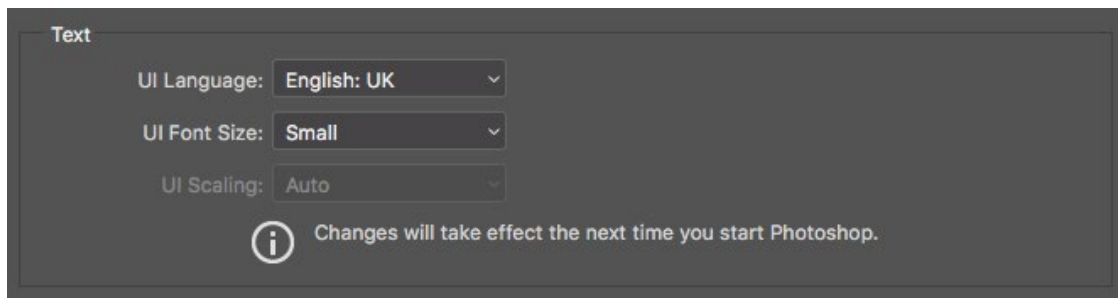


***If you need further instruction please do not hesitate to contact me through my profile page.**

QUESTIONS OR ISSUES?

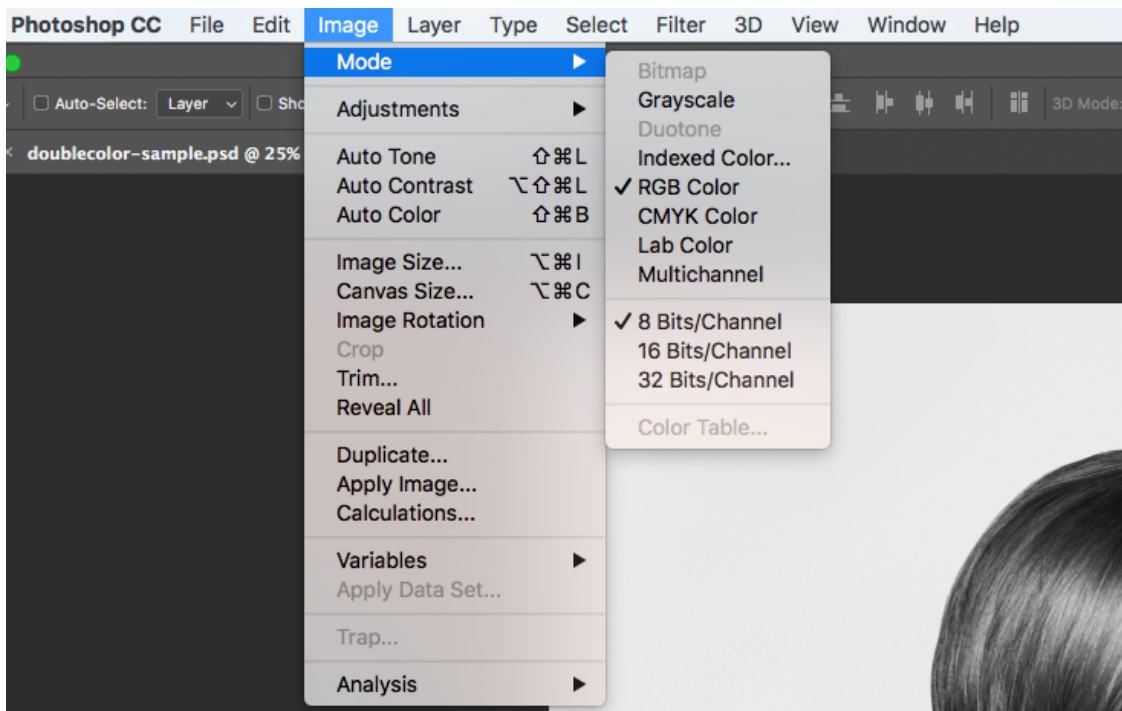
1 Make sure you are using the **English version of Photoshop**.

Photoshop > Preferences > Interface or Press Cmmd + K / Ctrl + K



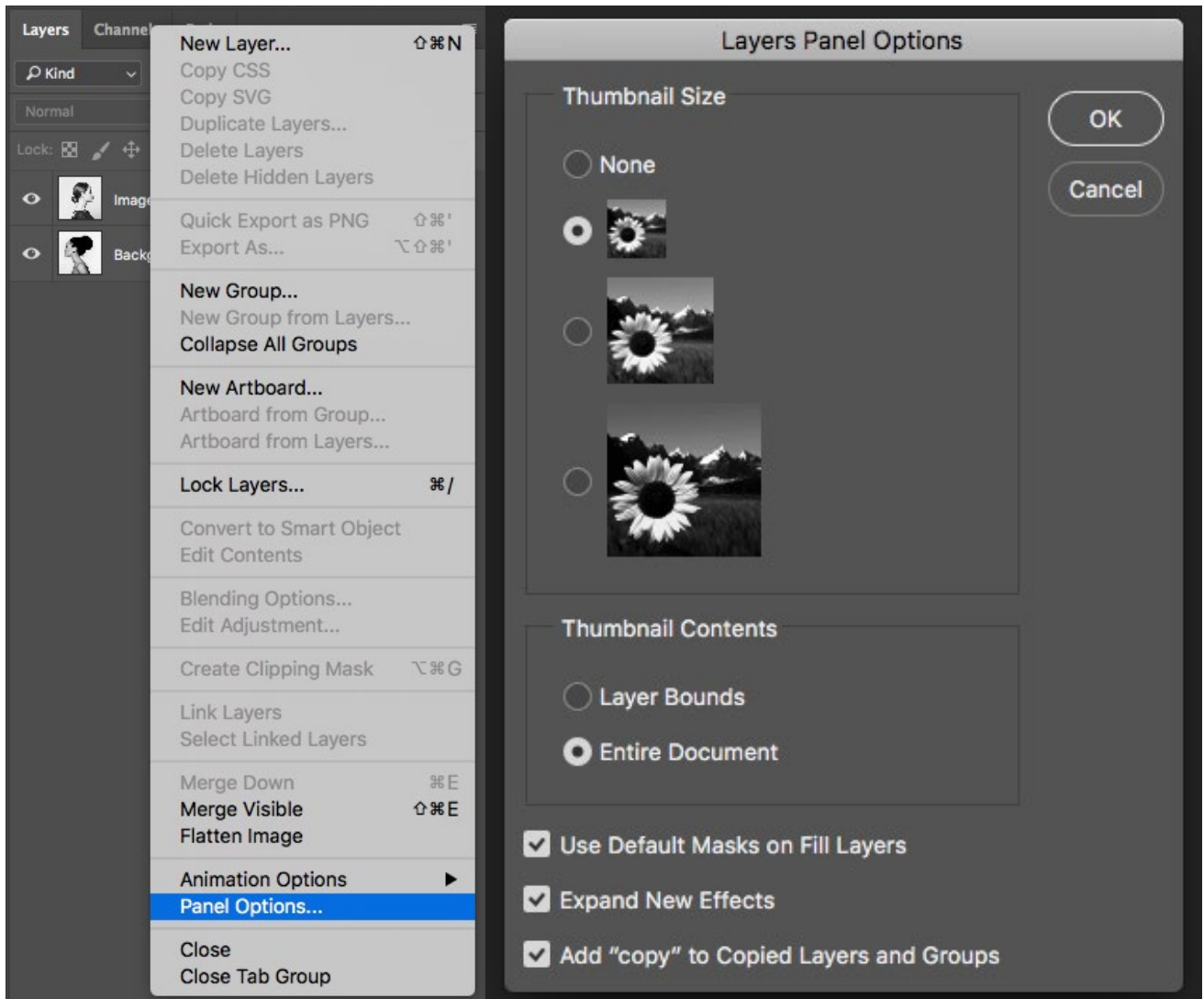
2 Your photo is in **RGB color mode, 8 Bits/Channel**.

Image > Mode



- 3** Check you have the checkbox ticked for **“Add Copy to Copied Layers and Groups”** inside the layer panel options.

Go to the top right hand corner icon in the layer panel and select Panel Options.



- 4** Be sure the document has a layer called **"Background"** and **"Brush"**.

