

Documentation

Contents. [Overview](#) [How to Use](#) [Tutorial Video](#) [Contact](#)

graphicriver.net/user/bornx

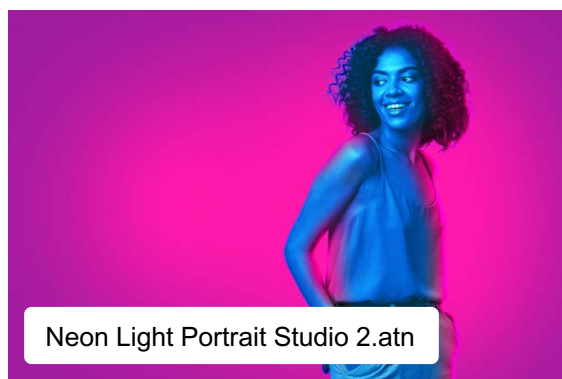
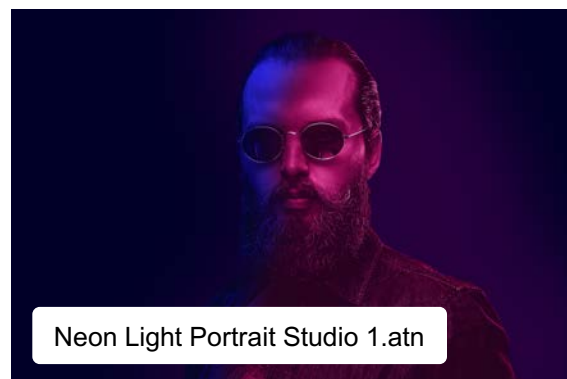
Overview

Jump to. [Overview](#) [How to Use](#) [Tutorial Video](#) [Contact](#)

File Info:

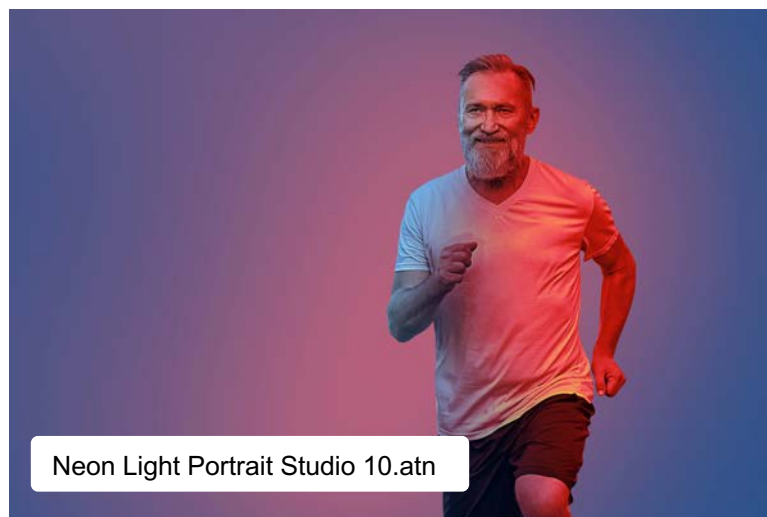
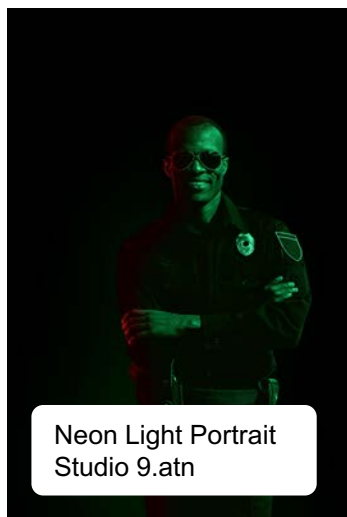
File format : .atn
Minimum Photoshop version : CC 2015

Actions Result Preview:



Overview

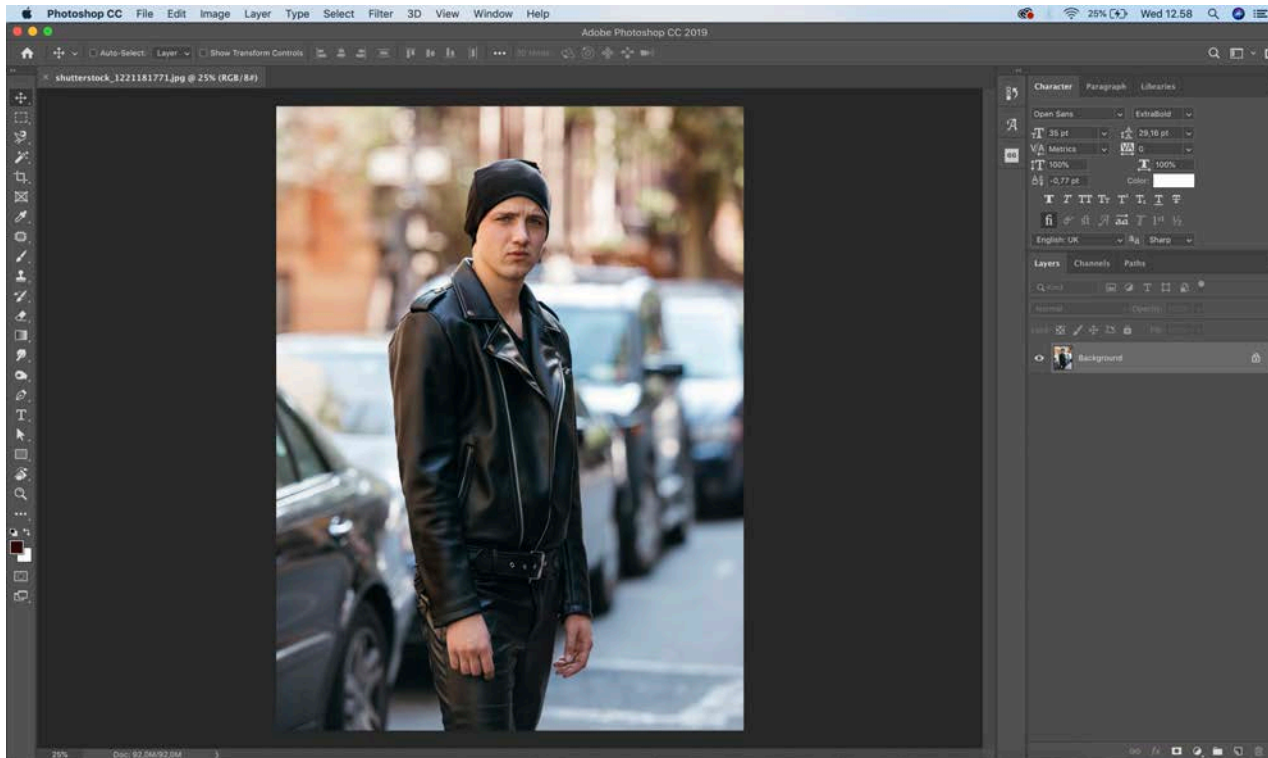
Jump to. [Overview](#) [How to Use](#) [Tutorial Video](#) [Contact](#)



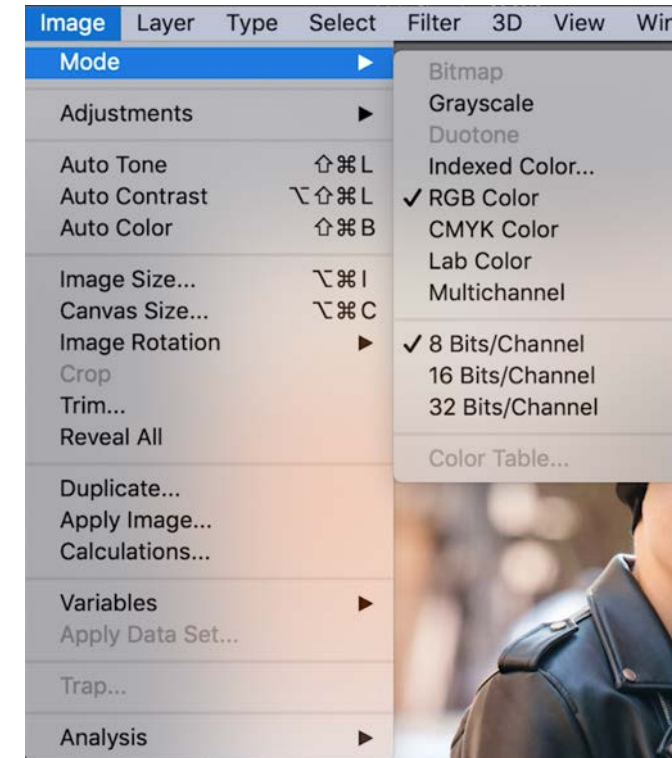
💡 How To Use

Jump to. [Overview](#) [How to Use](#) [Tutorial Video](#) [Contact](#)

#1 Open your photo file



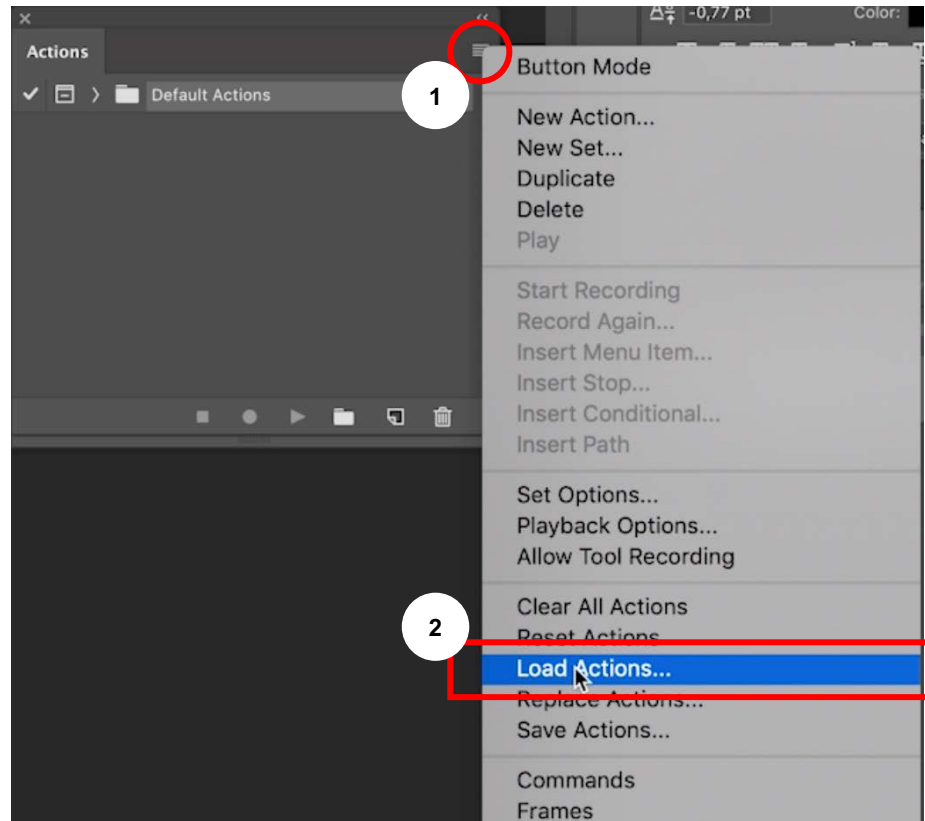
#2 Make sure your Photoshop is in RGB color mode and 8 bits channel



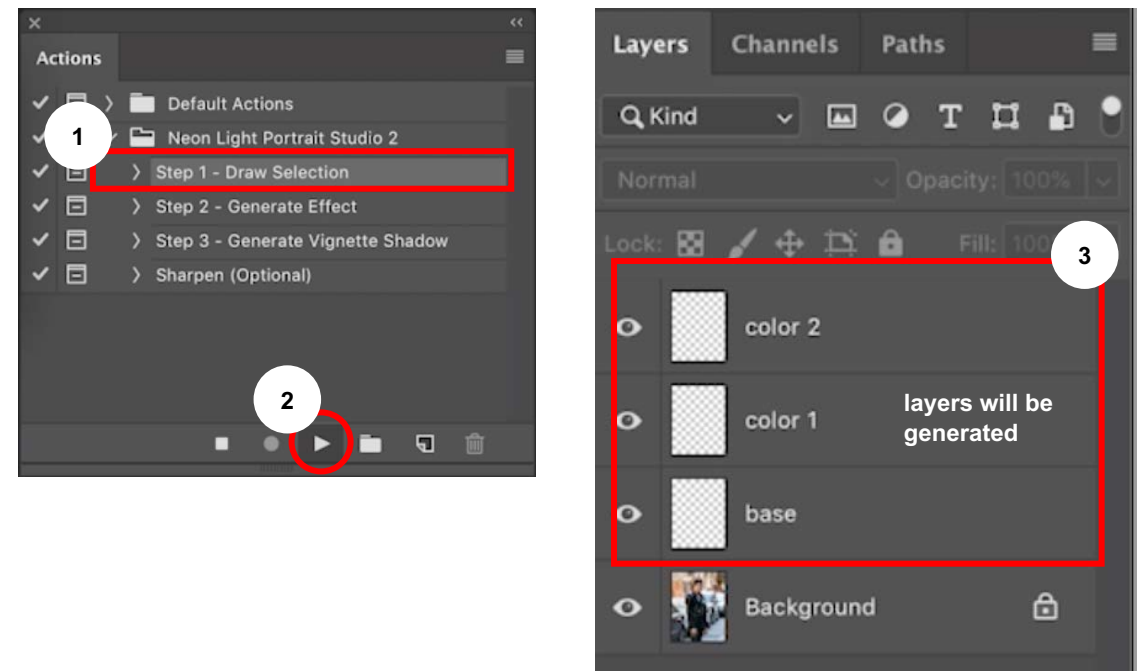
💡 How To Use

Jump to. [Overview](#) [How to Use](#) [Tutorial Video](#) [Contact](#)

#3 On Actions panel (Window > Actions), load the action file



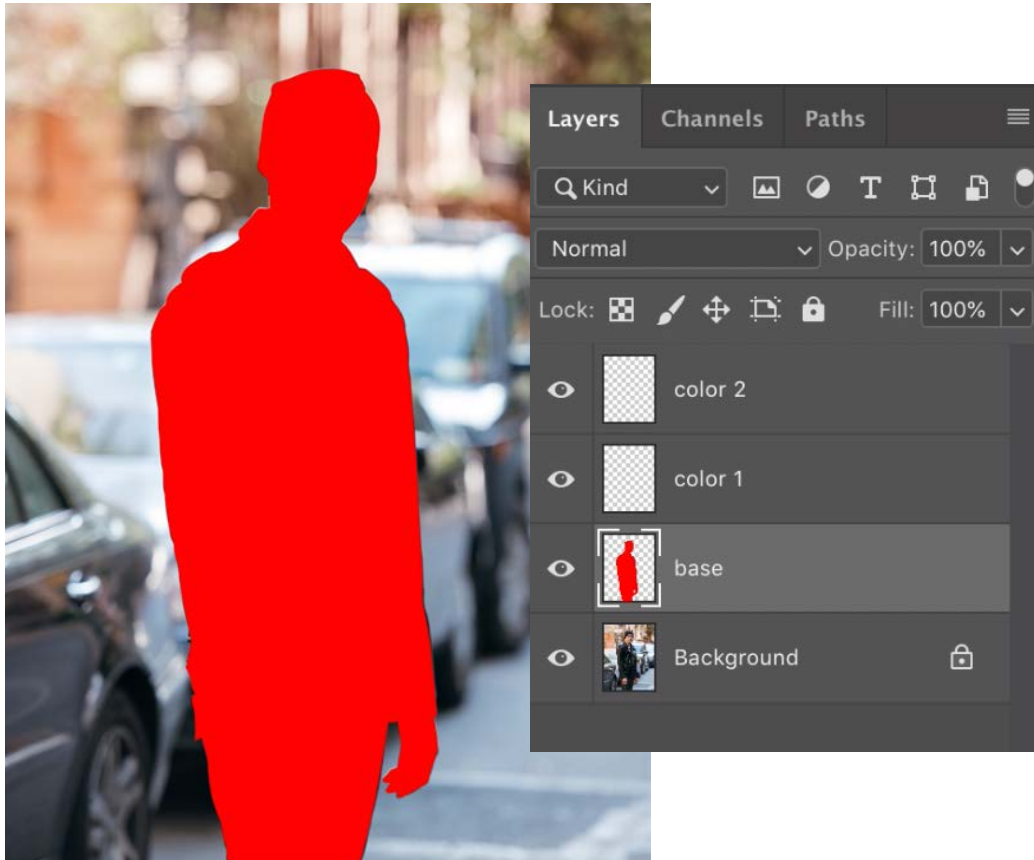
#4 First, play 'Step 1' action. It will generate layers where you can draw/paint effect focus area and also there will be pop-up message contains instructions. Just click stop and follow the instructions.



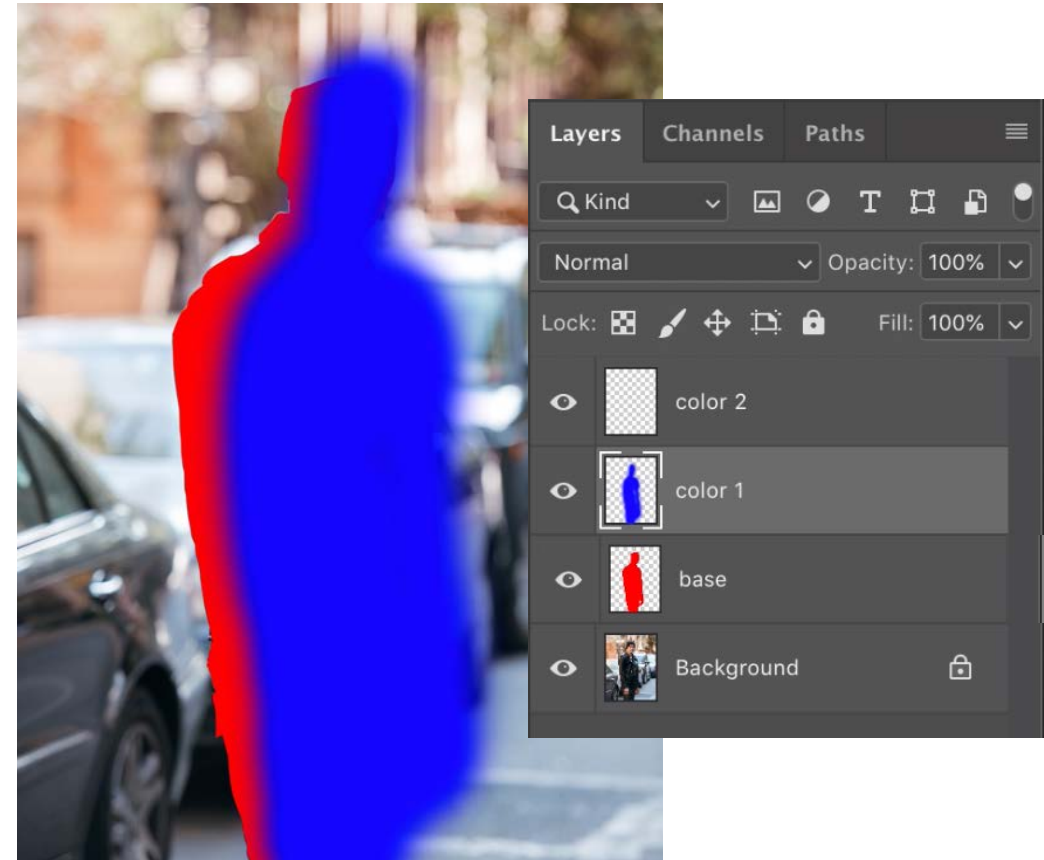
How To Use

Jump to. [Overview](#) [How to Use](#) [Tutorial Video](#) [Contact](#)

#5 Draw/paint model selection area on 'base' layer



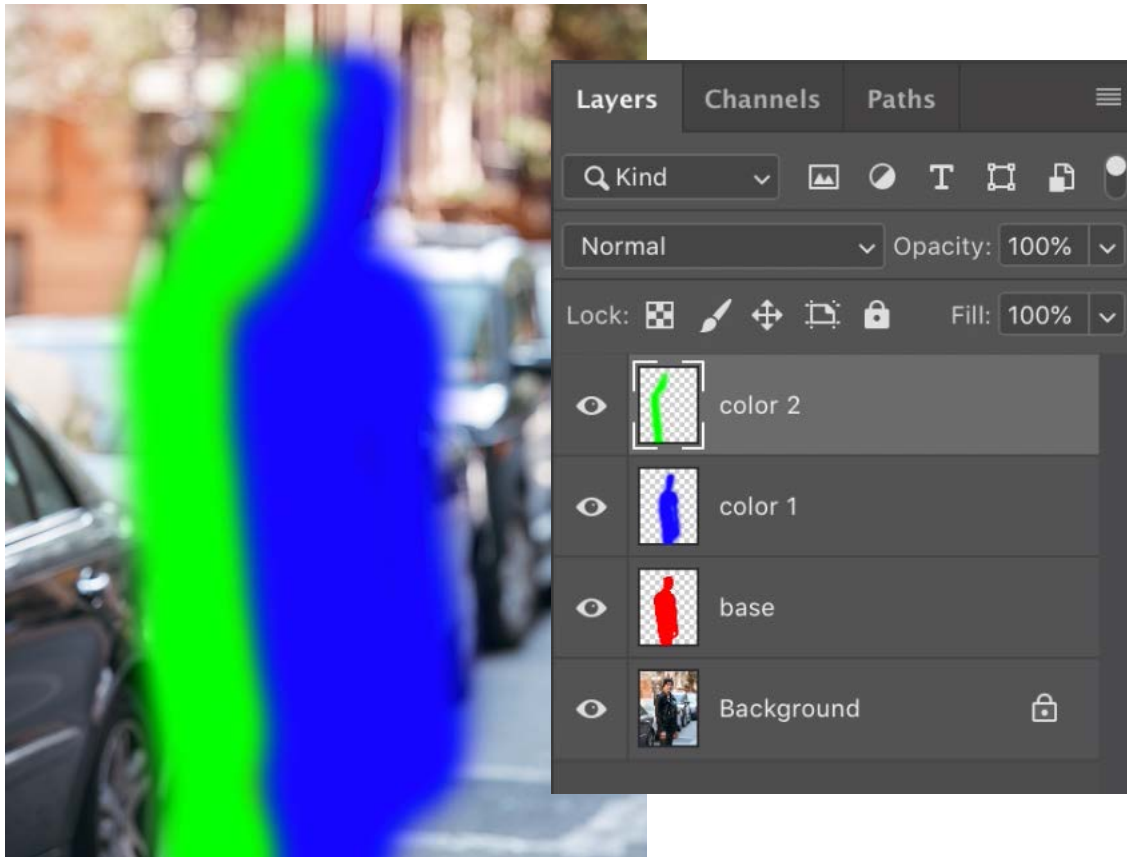
#6 Draw/paint neon light focus area on 'color 1' layer using soft brush



How To Use

Jump to. [Overview](#) [How to Use](#) [Tutorial Video](#) [Contact](#)

#7 Now draw/paint the other neon light focus area on 'color 2' layer also using soft brush

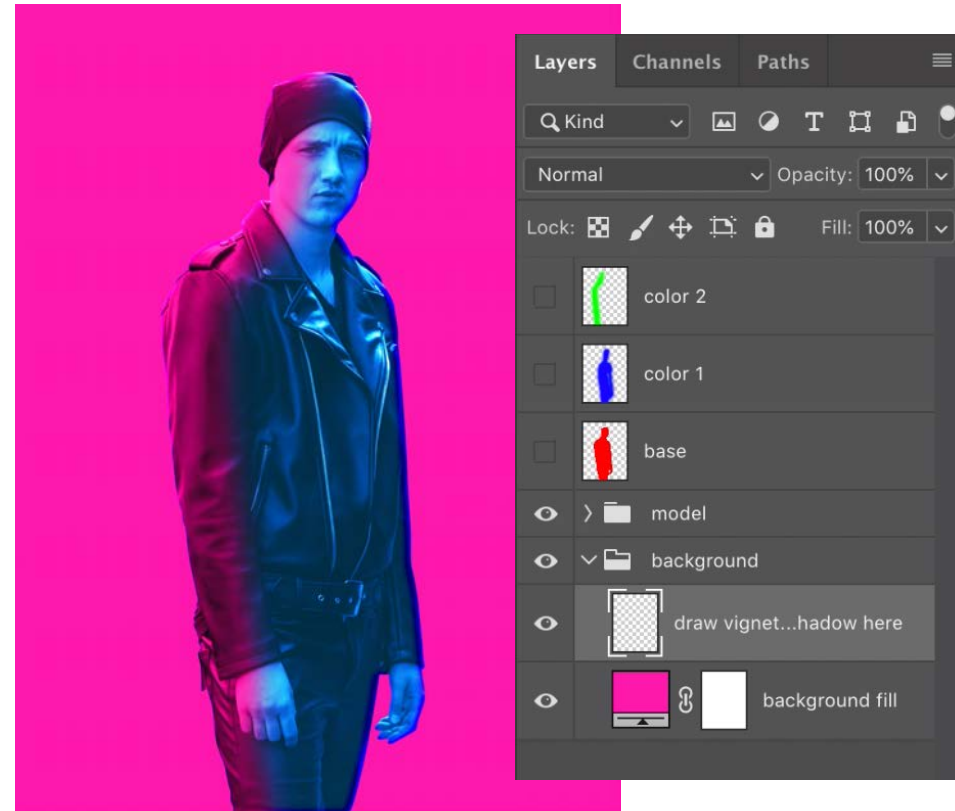
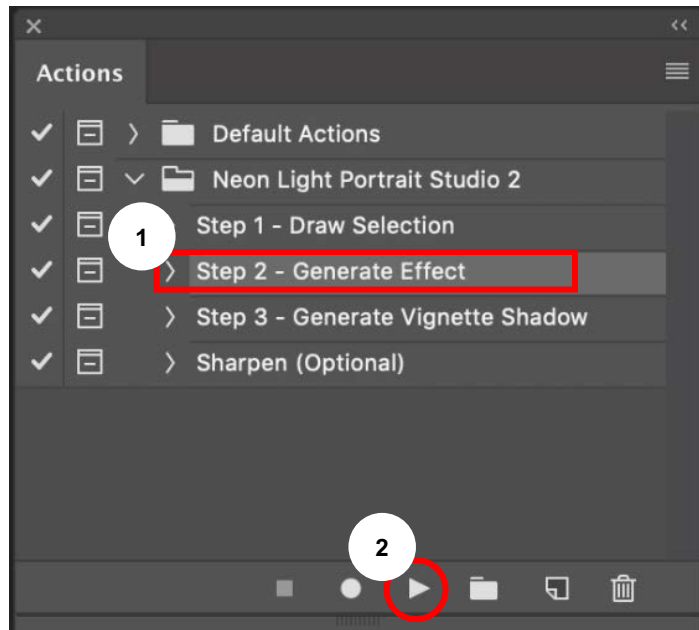


The colors are optional and don't affect Action performance. You can use any colors you want.

How To Use

Jump to. [Overview](#) [How to Use](#) [Tutorial Video](#) [Contact](#)

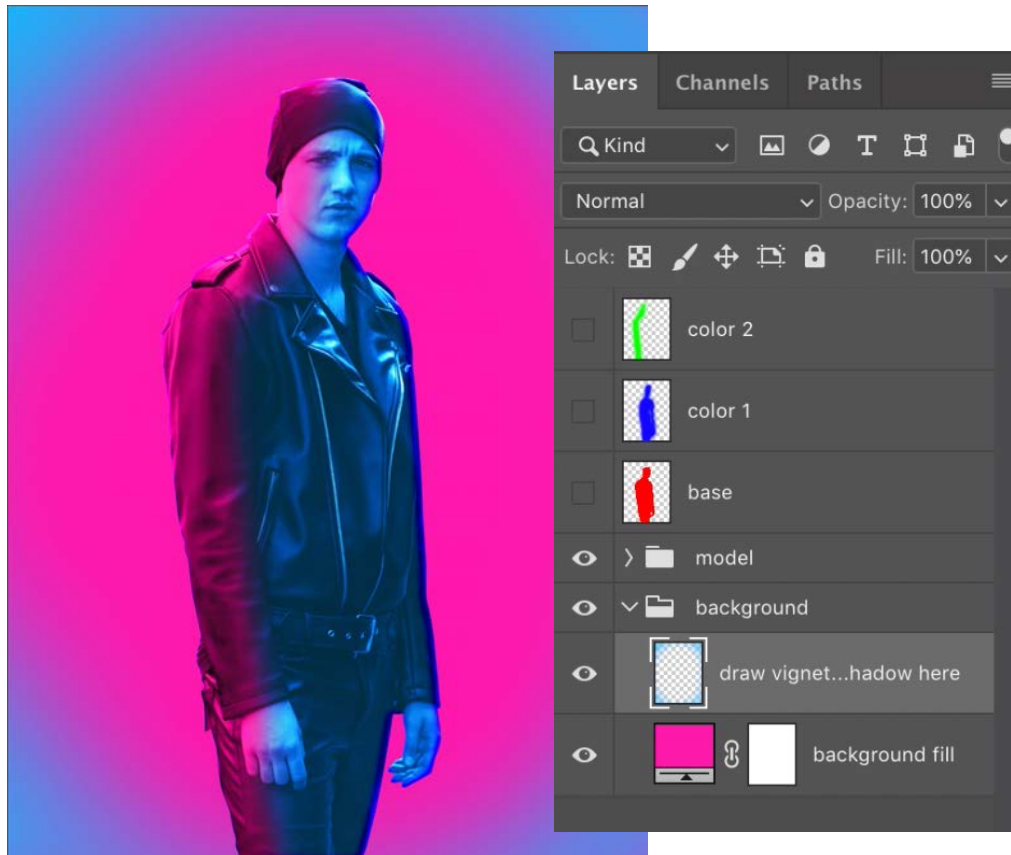
#8 After you got 3 areas painted (model selection area on 'base' layer, neon light 1 area on 'color 1' layer, and neon light 2 area on 'color 2' layer), now play 'Step 2' Action to generate the effect. Just like before, there will be pop-up message contains next step instructions. Just click Stop and follow the instructions.



How To Use

Jump to. [Overview](#) [How to Use](#) [Tutorial Video](#) [Contact](#)

#8 Draw vignette shadow area on 'draw vignette shadow here' layer using soft brush. Again, the brush color is optional and doesn't affect the Action performance, you can use any colors you want.



There are 2 types of background in this Actions pack, 'soft light'/'background light' and 'vignette shadow'.

The 'soft light'/'background light' is a soft light behind the model photo and 'vignette shadow' is shadow around the corners of the photo.

So if you play the Action that generates 'soft light' or 'background light' layer inside 'background' folder, this means you need to draw soft light area behind the model photo using soft brush.

Please check the example on next slide.

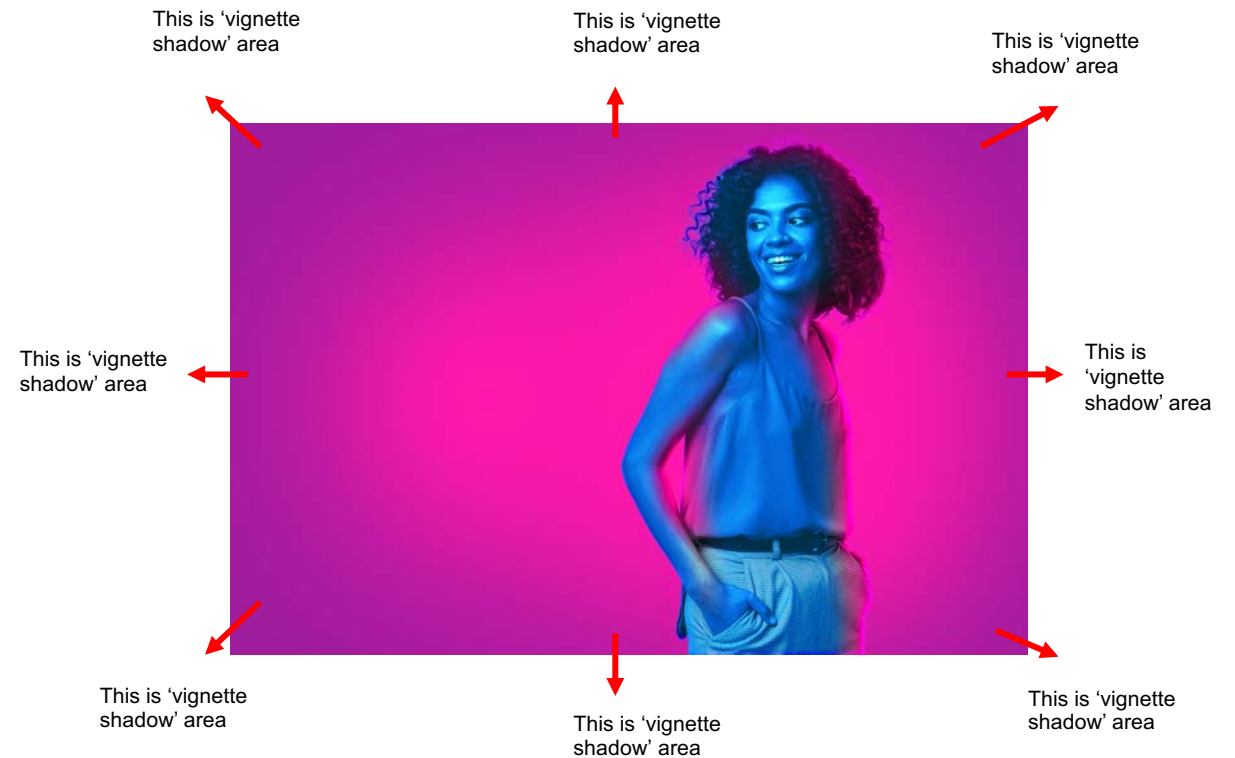
‘Soft Light’ or ‘Background Light’ area

soft light behind the model photo



‘Vignette shadow’ area

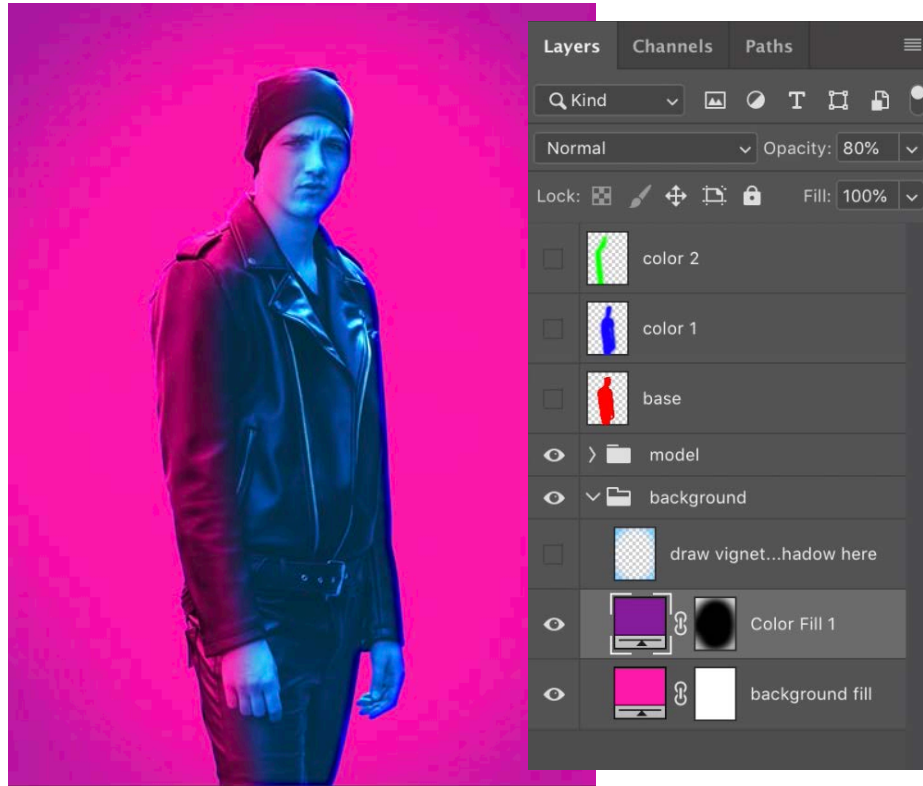
shadow around the corners of photo



How To Use

Jump to. [Overview](#) [How to Use](#) [Tutorial Video](#) [Contact](#)

#9 Back to the tutorial. After you paint the vignette shadow area on 'draw vignette shadow here' layer, now play 'Step 3' action to generate background effect.



#10 You can add sharpen effect by playing 'Sharpen (Optional)' action if you like it. There will be Unsharp Mask, Smart Sharpen, and High Pass pop-up window. Just click OK or insert your preferable value to your photo.

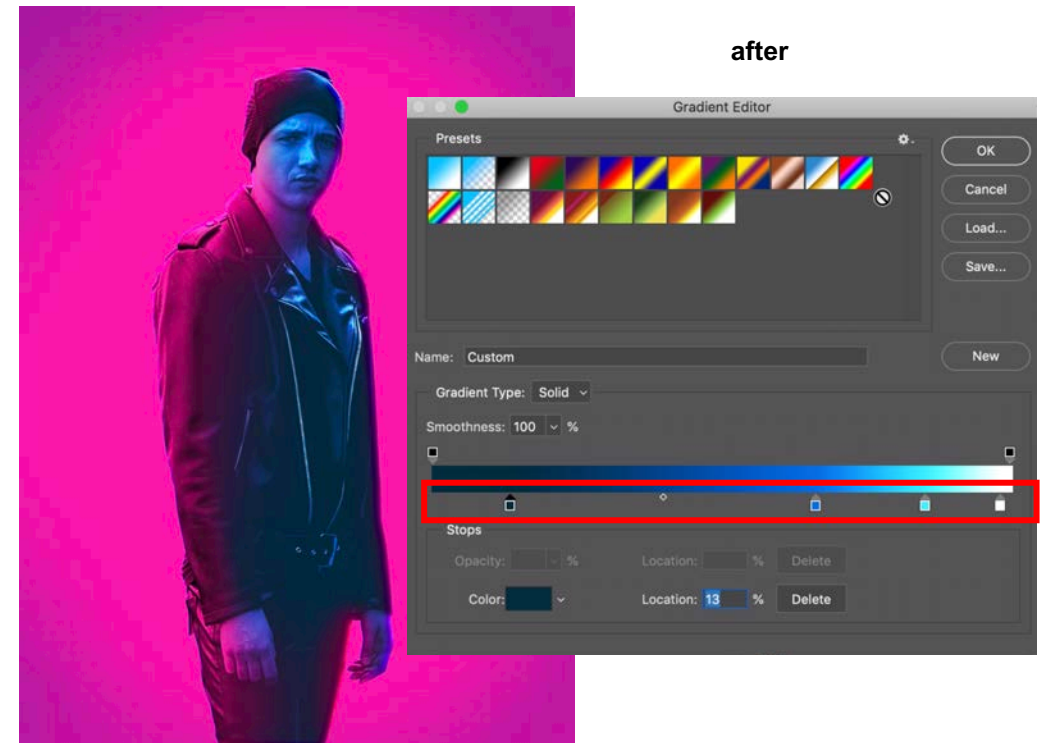
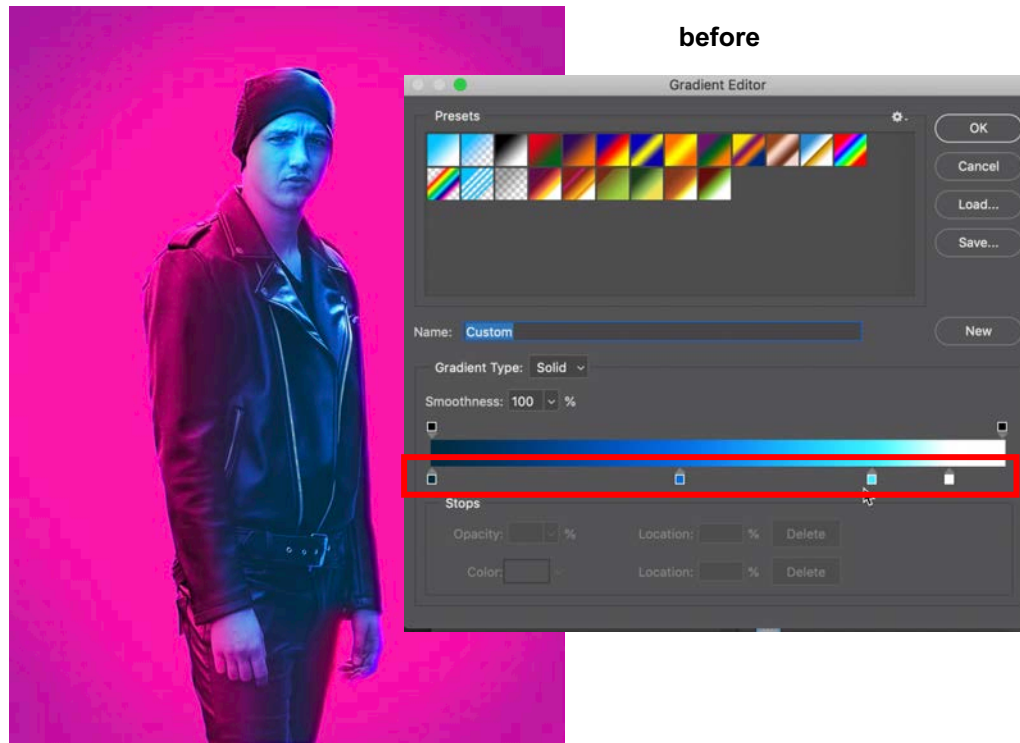
💡 How To Use

Jump to. [Overview](#) [How to Use](#) [Tutorial Video](#) [Contact](#)

#Extra Tips 1

You can adjust 'light source 1' and 'light source 2' Gradient Map adjustment layer by sliding the color slider to control light & shadow strength.

* 'light source 1' and 'light source 2' Gradient Map adjustment layer are located inside 'model' folder

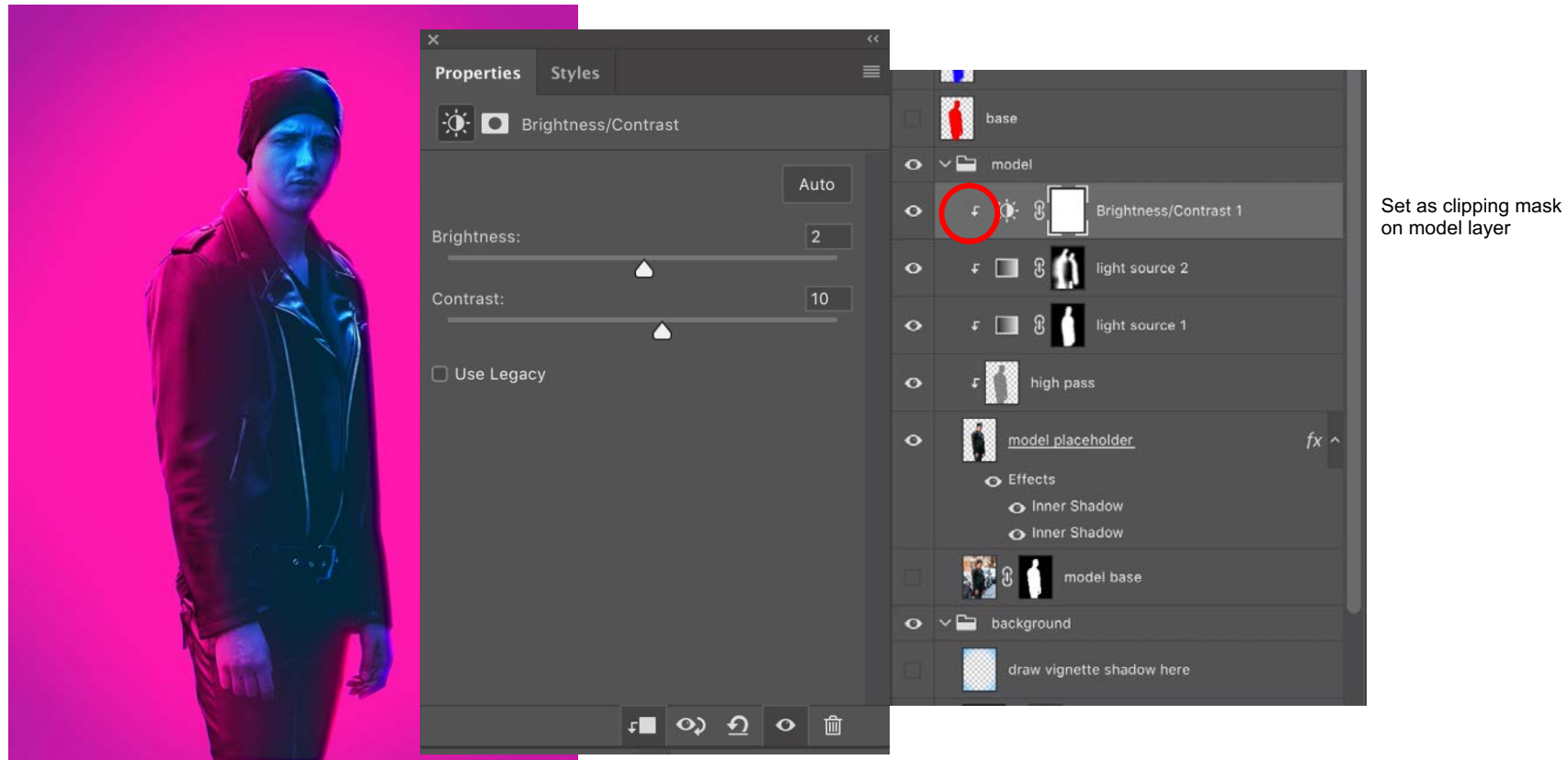


💡 How To Use

Jump to. [Overview](#) [How to Use](#) [Tutorial Video](#) [Contact](#)

#Extra Tips 2

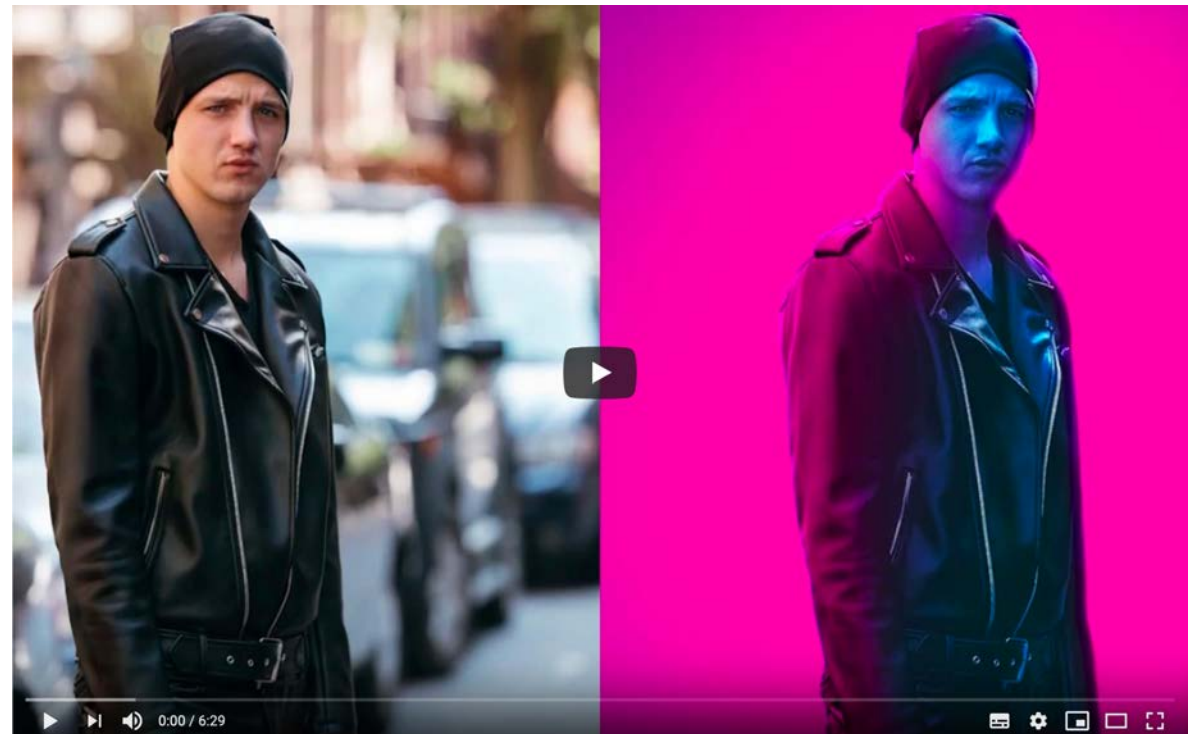
You can also add Brightness/Contrast adjustment layer on model layer to create more realistic effect



Watch 6 minutes video tutorial on how to use the Action and create realistic neon light studio effect for your photo

<https://youtu.be/EHfLNA3eP7k>

In this video I use 'Neon Light Portrait Studio 2.atn'



24/7 Support

Jump to. [Overview](#) [How to Use](#) [Tutorial Video](#) [Contact](#)

Any questions? Need extra help? Or need custom design service? Let's discuss

Drop me an email bornxdesign@gmail.com

Chat with me on Facebook <https://www.facebook.com/bornxdesign>

DM me on Instagram [@bornx](#)

Thanks for purchasing our item, have a great day